

Laboratory Equipment



LABORATORY OVENS

Analog Lab Ovens

The 'GC', (gravity convection) and 'AF' (air forced), Lab Series Ovens series are designed to meet the laboratory needs of industry, research organizations and schools. Well-crafted and versatile, they are used for part drying, baking, curing, sterilizing, evaporating, heat treating, annealing, and testing, as well as many more applications.

ANALOG GRAVITY CONVECTION LAB OVENS

CATALOG NO.	EXTERIOR DIMENSIONS	INTERIOR DIMENSIONS	VOLUME
MLS-10GC	14x17.5x12.3	12x10x10	0.7 cu.ft.
MLS-20GC	15x21.5x15.3	13x13x13	1.25 cu.ft.
MLS-30GC	20x25.5x14.3	18x15.6x12	2.0 cu.ft.
MLS-40GC	20x31.5x16.3	18x21.8x14	3.0 cu.ft.



ANALOG AIR FORCED CONVECTION LAB OVENS

CATALOG NO.	EXTERIOR DIMENSIONS	INTERIOR DIMENSIONS	VOLUME
MLS-10AF	14x20.5x12.3	12x8.25x10	0.6cu.ft.
MLS-20AF	15x25x15.3	13x11x13	1.14 cu.ft.
MLS-30AF	20x29x14.3	18x14.2x12	1.83 cu.ft.
MLS-40AF	20x35x16.3	18x19.8x14	2.86 cu.ft.



Features:

- *Bi-metal thermostat (10 GC & AF Series only).*
- *Hydraulic thermostat.*
- *Accuracy of $\pm 3^{\circ}\text{C}$.*
- *Over-temperature safety feature.*
- *Corrosion resistant aluminized interior.*
- *115 Volts & 230 Volts available.*
- *Resistive-tubular incoloy heating elements.*
- *1" inch of high density mineral wool insulation.*
- *Insulated Steel Doors with high impact thermoplastic handles.*
- *2 adjustable and 1 fixed nickel plated shelves.*
- *Baked in scratch-resistant powder coated finish.*
- *A circulating fan which provides air circulation for improved uniformity (AF Models only).*

CUSTOMIZE
YOUR OWN
MODEL

LABORATORY OVENS

Vacuum Ovens

SVAC vacuum ovens provide exceptional capabilities for fast and gentle drying of heat-sensitive materials. These vacuum ovens have stainless steel interiors and provide exceptional durability and stability. Vacuum ovens prevent residue accumulation on products and use lower temperatures than typical convection ovens.

CATALOG NO.	EXTERIOR DIMENSIONS	INTERIOR DIMENSIONS	VOLUME	UNIT WEIGHT
MLS-SVAC1	17.5 × 23.0 × 23.7	9 × 12 × 9	0.56 cu.ft.	102 lbs
MLS-SVAC2	20.8 × 31.3 × 26.8	12 × 20 × 12	1.67 cu.ft.	182 lbs
MLS-SVAC4	27 × 35.2 × 32.8	18 × 24 × 18	4.5 cu.ft.	317 lbs



Features:

- *Watlow Controller.*
- *Generous Usable Shelf Area.*
- *Achieve Impressive Vacuum Levels.*
- *Built-in Overtemperature Protection*

High-performance Ovens

High-Performance Ovens are engineered to meet the most critical temperature requirements. They are designed for continuous drying operations at temperatures up to 306°C. User-Adjustable integrated overtemperature protection prevents control failure from damaging contents and guards against burnout. The Watlow controller provides a 40-step heat up and soak capability, 1°C control, and multiple levels of operator access and security. Process temperature and setpoint are displayed in dual three-digit LED readout for fast and accurate setting.



CATALOG NO.	EXTERIOR DIMENSIONS	INTERIOR DIMENSIONS	VOLUME	UNIT WEIGHT
MLS-SMO5HP-2	35 × 30 × 37.6	20.5 × 20.7 × 20	4.9 cu.ft.	325 lbs

Features:

- *Horizontal Air Flow.*
- *CE Approval.*
- *Watlow EZ-Zone Controller.*
- *Stainless Steel Interior.*
- *Built-in Overtemperature Protection.*

CUSTOMIZE
YOUR OWN
MODEL

GLASSWARE WASHERS

Designed for ease of operation and flexible loading, these under counter and freestanding glassware washers feature upper and lower open racks and can accommodate a wide range of glassware. All models feature a soft touch controller, improved dryer, and noise buffering insulation for a quieter run. Three separate filters protect pumps from debris and are conveniently located for easy access. Multiple cycle selections and microprocessor control systems ensure that each load is processed with minimum energy consumption.



CATALOG NO.	MLS-UCW-HA20001
DESCRIPTION	Undercounter, with DI Rinse and Top and Bottom Spindle Rack Ready
WATER CONSUMPTION (GAL)	4
EXTERIOR WIDTH (IN)	24
EXTERIOR HEIGHT (IN)	36.38
EXTERIOR DEPTH (IN)	22.88
POWER (HZ)	60
WASHING TEMPERATURE (° C)	70

CATALOG NO.	MLS-UCW-HA00001
DESCRIPTION	Undercounter, with Tap Water Rinse and Top and Bottom Standard Racks
WATER CONSUMPTION (GAL)	4
EXTERIOR WIDTH (IN)	24
EXTERIOR HEIGHT (IN)	36.38
EXTERIOR DEPTH (IN)	22.88
POWER (HZ)	60
WASHING TEMPERATURE (° C)	70



**Different Models are also available upon request.
Contact us for more details.**

LABORATORY INCUBATORS

Analog Lab Incubators



CATALOG NO.	EXTERIOR DIMENSIONS	INTERIOR DIMENSIONS	VOLUME	WATTS
MLS-10-140	13"x 15"x 11"	12" X 10" X 10"	0.7 cu.ft	110
MLS-12-140	19" x 21"x 13"	18" X 16"X 12"	2.0 cu.ft	235
MLS-10-180	13"x 15" x 11"	12" X 10" X 10"	0.7 cu.ft	270
MLS-12-180	19" x 21" x 13"	18" X 16"X 12"	2.0 cu.ft	385

Digital Lab Incubators

CATALOG NO.	EXTERIOR DIMENSIONS	INTERIOR DIMENSIONS	VOLUME	WATTS
MLS-10-140E	13"x 15"x 11"	12" X 10" X 10"	0.7 cu.ft	110
MLS-10-140E	19" x 21"x 13"	18" X 16"X 12"	2.0 cu.ft	235
MLS-10-180E	13"x 15" x 11"	12" X 10" X 10"	0.7 cu.ft	270
MLS-12-180E	19" x 21" x 13"	18" X 16"X 12"	2.0 cu.ft	385



Features:

- *Precise bimetal controller.*
- *Temperature accuracy of $\pm 0.75^{\circ}\text{C}$ 115 & 230 Volts available.*
- *High grade aluminum interior.*
- *Powder coated CR steel exterior.*
- *Resistive-tubular incoloy heating elements.*
- *Bronze acrylic see-through door (140 Series)*
- *Solid insulated steel door (180 Series).*
- *One Fixed and one adjustable shelf.*
- *Precision thermometer with rubber grommet.*

**CUSTOMIZE
YOUR OWN
MODEL**

LABORATORY INCUBATORS

Air forced Incubators

These Analog Incubators units were custom-developed for laboratories that need a dependable, compact incubator for cultures, test kits, eggs and biologicals. These incubators are ideal for clinical, industrial and school laboratories, for physicians' offices, as well as general purpose warming cabinet. Our (AE) incubator models are ideal for large or high density loads or applications requiring faster warm-thru times. The air forced incubator gentle cross-air flow offers improved heating capacity and improved temperature uniformity.



CATALOG NO.	EXTERIOR DIMENSIONS	INTERIOR DIMENSIONS	VOLUME	WATTS
MLS-10-140AE	13"x 15"x 11"	10.5"X 9.4" X 12"	0.7 cu.ft	115
MLS-12-140AE	19" x 21"x 13"	16" X 15.4" X 12"	1.8 cu.ft	115
MLS-10-180AE	13"x 15" x 11"	10.5" X 9.4"X 12"	0.7 cu.ft	115
MLS-12-180 AE	19" x 21" x 13"	16"X 15.4" X 12"	1.8 cu.ft	115

- **Features include:**
- **Digital PID microprocessor**
- **Temperature accuracy of $\pm 0.5^{\circ}\text{C}$**
- **115 & 230 Volts available.**
- **High grade aluminum interior.**
- **Powder coated CR steel exterior.**
- **Resistive-tubular incoloy heating element**
- **Full horizontal air flow within the chamber.**
- **Bronze acrylic see-through door (140 Series)**
- **Solid insulated steel door (180 Series).**
- **Adjustable shelves and spill tray.**



ROTARY EVAPORATORS

Rotary Evaporators feature large easy to read digital and LCD & LED displays, controlling temperature, rotation speed and time. Some models feature motorized towers and range from 5L to 20L capacities. Vertical coil condenser or vertical dry-ice condensers are available for water and oil use to a maximum temperature to 180°C.



CATALOG NO.	DESCRIPTION
MLS-6030112124	SCI20L-Pro 20L Rotary Evaporator, Vertical Coiled Condenser, 20L evaporating flask and 10L receiving flask, 220-240V, 50/60Hz

CATALOG NO.	DESCRIPTION
MLS-6030120211	SCI100-S Rotary Evaporator including vertical coiled condenser, 5L bath, 1000ml evaporating flask NS 24/40 and 1000ml receiving flask KS 35/20, 110V, 50/60Hz, US Plug



CATALOG NO.	DESCRIPTION
MLS-6030120220	SCI100-S Rotary Evaporator including dry-ice condenser, 5L bath, 1000ml evaporating flask NS 24/40 and 1000ml receiving flask KS 35/20, 110V, 50/60Hz, US Plug

CATALOG NO.	DESCRIPTION
MLS-61113206	SCI100-Pro Rotary Evaporator including vertical dry-ice condenser, 5L bath, 1000ml evaporating flask NS 24/40 and 1000ml receiving flask KS 35/20, 110V, 50/60Hz, US Plug



CATALOG NO.	DESCRIPTION
MLS-61113201	SCI100-Pro Rotary Evaporator including vertical coiled condenser, 5L bath, 1000ml evaporating flask NS 24/40 and 1000ml receiving flask KS 35/20, 110V, 50/60Hz, US Plug

**Different Models are also available upon request.
Contact us for more details.**

HOTPLATES STIRRERS

Digital hotplates and hotplate-stirrers have easily readable displays. The heat and stirring control knobs allow the user easily to set the target temperature and speed. The display will then revert to real-time temperature.



CATALOG NO.	DESCRIPTION
MLS-51212101	SCI550-H LED Digital 7x7 Hotplate (550°C Max.)



CATALOG NO.	DESCRIPTION
MLS-5031132115	SCI500H-Pro LCD Digital 10x10 Hotplate (500°C Max.)



CATALOG NO.	DESCRIPTION
MLS-5031151114	SCI380H-Pro 5.5 x 5.5 in. LCD Digital Hotplate (380°C Max.)

CATALOG NO.	DESCRIPTION
MLS-81322100	SCI550-S LED Digital 7" Square Magnetic Hotplate Stirrer, ceramic-glass plate, 110V, 50/60Hz US Plug



**Different Models are also available upon request.
Contact us for more details.**

HOTPLATES STIRRERS

Digital hotplates and hotplate-stirrers have easily readable displays. The heat and stirring control knobs allow the user easily to set the target temperature and speed. The display will then revert to real-time temperature.



CATALOG NO.	DESCRIPTION
MLS-8030132115	SCI500HS-Pro LCD Digital 10x10 Magnetic Hotplate Stirrer (500°C Max.)

CATALOG NO.	DESCRIPTION
MLS-86149201	SCI340-Pro Circular-top LCD Digital Hotplate Stirrer (340°C Max.)



CATALOG NO.	DESCRIPTION
MLS-86143101	SCI280-Pro Circular-top LED Digital Hotplate Stirrer (280°C Max.)

**Different Models are also available upon request.
Contact us for more details.**

LABORATORY CENTRIFUGE

A wide variety of mini centrifuges, clinical centrifuges, hematocrit centrifuges, microcentrifuges, multipurpose centrifuges are available at Maple Lab Systems. Engineered with high-quality rotors and adapters, our centrifuges are ideal for a wide variety of lab applications. Quiet, vibration-free, and easy-to-use, you can expect nothing but high efficiency and precision from our units.



CATALOG NO.	DESCRIPTION
MLS-91502303	SCI636 Multi-Purpose Centrifuge, 3mL-100mL capacity, 300 - 6000rpm

CATALOG NO.	DESCRIPTION
MLS-91305341	SCI506 Clinical Centrifuge, 6 x 1.5-15ml capacity, 300-5000rpm



CATALOG NO.	DESCRIPTION
MLS-91302341	SCI412 Clinical Centrifuge, 8 x 1.5-15mL capacity, 300-4500rpm

CATALOG NO.	DESCRIPTION
MLS-91302343	SCI406 Clinical Centrifuge, 6 x 50ml or 6 x 15ml capacity, 300-4000rpm



**Different Models are also available upon request.
Contact us for more details.**

LABORATORY CENTRIFUGE

A wide variety of mini centrifuges, clinical centrifuges, hematocrit centrifuges, microcentrifuges, multipurpose centrifuges are available at Maple Lab Systems. Engineered with high-quality rotors and adapters, our centrifuges are ideal for a wide variety of lab applications. Quiet, vibration-free, and easy-to-use, you can expect nothing but high efficiency and precision from our units.



CATALOG NO.	DESCRIPTION
MLS-9I201513	SCI24 High Speed Micro-Centrifuge, 200-15000rpm

CATALOG NO.	DESCRIPTION
MLS-9I202553	SCI24H Digital Hematocrit Centrifuge, 24 x capillary tubes (1mm x 75mm)



CATALOG NO.	DESCRIPTION
MLS-901312112109	SCI-1524R High Speed Refrigerated Micro-Centrifuge with 24 place 1.5/2.0mL rotor

CATALOG NO.	DESCRIPTION
MLS-91101511	SCI-12 High Speed Personal Micro-Centrifuge, 500-15000rpm



**Different Models are also available upon request.
Contact us for more details.**

SHAKERS AND ROCKERS

The linear laboratory shakers are available in two different sizes, suitable for samples up to a maximum combined weight of 2.5 kg and 7.5 kg, respectively. The reciprocating linear motion through a range of 10 mm thoroughly mixes samples efficiently and effectively. The orbital lab shakers are well designed and robust, providing a long working life even under repeated and continuous use. We offer two sizes of orbital shaker, suitable for mixing samples with a combined weight of 2.5kg and 7.5 kg respectively.



CATALOG NO.	DESCRIPTION
MLS-83313101	SCI-RS Digital See-Saw Rocker, 7° angle, with Anti-Slip Tissue Culture Flask Platform and Straps, 100-220V, 50/60Hz, US Plug

CATALOG NO.	DESCRIPTION
MLS-83321001	SCIR-Pro LCD Digital See-Saw Rocker, 9° angle, with Anti-Slip Tissue Culture Flask Platform and Straps, 100-220V, 50/60Hz, US Plug



CATALOG NO.	DESCRIPTION
MLS-83201008	SCI-O330-Pro Orbital LCD Digital Shaker (with FREE 18900027 Universal Platform) (7.5 Kg capacity), 100-220V, 50/60Hz, US Plug

CATALOG NO.	DESCRIPTION
MLS-83211101	SCI-O180-S Orbital Digital Shaker with Anti-Slip Tissue Culture Flask Platform & Straps, (3Kg capacity), 100-220V, 50/60Hz, US Plug



**Different Models are also available upon request.
Contact us for more details.**

SHAKERS AND ROCKERS

The linear laboratory shakers are available in two different sizes, suitable for samples up to a maximum combined weight of 2.5 kg and 7.5 kg, respectively. The reciprocating linear motion through a range of 10 mm thoroughly mixes samples efficiently and effectively. The orbital lab shakers are well designed and robust, providing a long working life even under repeated and continuous use. We offer two sizes of orbital shaker, suitable for mixing samples with a combined weight of 2.5kg and 7.5 kg respectively.



CATALOG NO.	DESCRIPTION
MLS-83201005	SCI-O180-Pro Orbital LCD Digital Shaker (with FREE Universal Platform) (2.5Kg capacity), 100-220V, 50/60Hz, US Plug

CATALOG NO.	DESCRIPTION
MLS-831010089	SCI-L330-Pro Linear LCD Digital Shaker (with FREE 18900027 Universal Platform) (7.5 Kg capacity), 100-220V, 50/60Hz, US Plug



CATALOG NO.	DESCRIPTION
MLS-83101005	SCI-L180-Pro Linear LCD Digital Shaker (with FREE Universal Platform) (2.5Kg capacity), 100-220V, 50/60Hz, US Plug

CATALOG NO.	DESCRIPTION
MLS-83411101	SCI-3DS Digital 3D Rocker, 7° angle, with Anti-Slip Tissue Culture Flask Platform and Straps, 100-220V, 50/60Hz, US Plug



**Different Models are also available upon request.
Contact us for more details.**

VORTEX MIXERS

Our vortex mixers are compact and stable. A fixed-speed vortex mixer is available which provides vortexing at 2500 rpm, a standard setting for many applications. If greater variability is required, the variable speed vortex mixer can be used, which offers variable speed from 0 to 2500 rpm. Both models have an electronic speed control to ensure the same speed is maintained at all times, even during changes of load and both feature continuous or touch operation. The orbital diameter of both models is 4 mm, providing an effective and efficient mixing vortex inside the sample. A wide range of accessories is available for the vortex mixers, ensuring that samples in almost any vessel can be mixed using these instruments.



CATALOG NO.	DESCRIPTION
MLS-82120004	SCI-VS Variable Speed Vortex Mixer, 250-3000rpm

Features:

- Variable speed control from 250 to 3000rpm
- Quiet and compact stable design
- Used for various mixing applications with optional adapters
- Adapters available for tubes etc. (sold separately)
- Touch operation or continuous mode
- Electronic speed control for constant speed even during changes in load
- Steel base, silicone feet for ultra stability and vibration damping
- Specially designed vacuum suction feet for body stability
- Robust aluminum-cast construction
- CE Marked
- 2 YEAR WARRANTY

CATALOG NO.	DESCRIPTION
MLS-82110004	SCI-FS Fixed Speed Vortex Mixer, 3000rpm

Features:

- Fixed Speed 3000rpm
- Compact stable design
- Touch operation or continuous mode
- Used for various mixing applications with optional adapters
- Electronic speed control for constant speed even during changes in load
- Specially designed vacuum suction feet for body stability
- Steel base, silicone feet for ultra stability and vibration damping
- Robust aluminum-cast construction
- CE Marked
- 2 YEAR WARRANTY



**Different Models are also available upon request.
Contact us for more details.**

PIPETTORS

Electronic and Manual pipettors

MicroPette Single Channel Variable Pipettors



CATALOG NO.	SIZES
MLS-71211101	0.1-2.5µl
MLS-71211104	0.5-10µl
MLS-71211105	2-20µl
MLS-71211106	5-50µl

CATALOG NO.	SIZES
MLS-71211108	10-100µl
MLS-71211109	20-200µl
MLS-71211114	100-1000µl
MLS-71211117	1000-5000µl
MLS-71211133	2000-10000µl

Features:

- *Lightweight and ergonomic design*
- *Clear digital display*
- *Integral tip ejector for access into narrow tubes*
- *Easy to calibrate and maintain with tool supplied*
- *Autoclavable tip-cone*
- **3 YEAR WARRANTY**

MicroPette Single Channel Fixed Volume Pipettors

CATALOG NO.	SIZES
MLS-71212118	5µl
MLS-71212119	10µl
MLS-71212120	20µl
MLS-71212121	25µl
MLS-71212122	50µl
MLS-71212123	100µl

CATALOG NO.	SIZES
MLS-71212124	200µl
MLS-71212125	250µl
MLS-71212126	500µl
MLS-71212127	1000µl
MLS-71212128	2000µl
MLS-71212129	5000µl



Features:

- *Fully autoclavable at 121°C*
- *Ergonomic design provides excellent operating experience*
- *Easy-to-read volume display*
- *Integral tip ejector for access into narrow tubes*
- *Easy to calibrate and maintain with tool supplied*
- *Autoclavable tip-cone*
- **1 YEAR WARRANTY**

PIPETTORS

Electronic and Manual pipettors



Electronic Motorized Single Channel Pipettors

CATALOG NO.	SIZES
MLS-715100019999	0.5-10ul
MLS-715101019999	5-50ul
MLS-715102019999	30-300ul
MLS-715103019999	100-1000ul

Features:

- High accuracy, high performance stepper motor ensures accuracy and repeatability, eliminating manual pipetting errors
- Integral tip ejector for access into narrow tubes
- Functions - PI (Pipetting), ST Multi-Dispensing, DI Series Dispensing
- 2 buttons handle all operational settings
- Light weight, ergonomic design, small body dimension for easy handling for fatigue free pipetting
- Adjustable speeds for aspiration and dispensing
- Auto power-off after 30 seconds of inactivity
- 1 YEAR WARRANTY



Electronic Pipettors

CATALOG NO.	SIZES
MLS-714112119999	0.5-10ul
MLS-714112219999	30-300ul
MLS-714112319999	10-100ul



Features:

- Intuitive interface for setting functions and parameters.
- Low operation forces for complete work which is exceptionally fatigue-free.
- 360° pipetting. Double knobs for simple and versatile control. Easy loading tip cones offers smooth and leak free operation.
- Use of USB charger or the charging stand to ensure uninterrupted use.



MicroPette Multi-Channel Pipettors



CATALOG NO.	SIZES
MLS-71211204	0.5-10µl
MLS-71211206	5-50µl
MLS-71211212	50-300µl

Features:

- *Lightweight and ergonomic design*
- *Fully autoclavable*
- *Clear digital display*
- *Staggered tip ejector for easy tip ejection*
- *Head rotates 360° for user comfort*
- *Easy to calibrate with tool supplied*
- *Used with 'universal' pipette tips*
- **3 YEAR WARRANTY**

MicroPette12-Channel Pipettors

CATALOG NO.	SIZES
MLS-71211304	0.5-10µl
MLS-71211306	5-50µl
MLS-71211312	50-300µl

Features:

- *Lightweight and ergonomic design*
- *Clear digital display*
- *Staggered tip ejector for easy tip ejection*
- *Head rotates 360° for user comfort*
- *Easy to calibrate with tool included*
- *Used with 'universal' pipette tips*
- **3 YEAR WARRANTY**



All pipettors have been quality tested according to ISO8655-2:2002 and are supplied with individual calibration certificates.

The quality control includes gravimetric testing of each pipette with distilled water at 22°C.

PIPETTORS

Diamond® APEX™ Pipettors



CATALOG NO.	Desceiption
MLS-3355-10	0.5 – 10uL Pipette, DiamondAPEX, Fully Autoclavable, 12-Channel, Adjustable Volume, Red
MLS-3355-20	2 – 20uL Pipette, DiamondAPEX, Fully Autoclavable, 12-Channel, Adjustable Volume, Yellow
MLS-3355-50	5 – 50uL Pipette, DiamondAPEX, Fully Autoclavable, 12-Channel, Adjustable Volume, Yellow
MLS-3355-100	10 – 100uL Pipette, DiamondAPEX, Fully Autoclavable, 12-Channel, Adjustable Volume, Blue
MLS-3355-200	20 – 200uL Pipette, DiamondAPEX, Fully Autoclavable, 12-Channel, Adjustable Volume, Lavender
MLS-3355-300	30 – 300uL Pipette, DiamondAPEX, Fully Autoclavable, 12-Channel, Adjustable Volume, Orange

Diamond® Pipettors

CATALOG NO.	Desceiption
MLS-3301-1	Pipette, Diamond, Adjustable Volume, 0.1 – 2.5uL, Pink
MLS-3301-10	Pipette, Diamond, Adjustable Volume, 0.5 – 10uL, Pink
MLS-3301-20	Pipette, Diamond, Adjustable Volume, 2 – 20uL, Pink
MLS-3301-50	Pipette, Diamond, Adjustable Volume, 5 – 50uL, Yellow
MLS-3301-100	Pipette, Diamond, Adjustable Volume, 10 – 100uL, Blue
MLS-3301-200	Pipette, Diamond, Adjustable Volume, 20 – 200uL, Lavender
MLS-3301-1000	Pipette, Diamond, Adjustable Volume, 100 – 1000uL, Orange
MLS-3301-5000	Pipette, Diamond, Adjustable Volume, 1000 – 5000uL (1-5mL), Light Green



PIPETTORS

Diamond® Advance™ Pipettors



CATALOG NO.	Desceiption
MLS-3341-1	Pipette, Diamond Advance, Fully Autoclavable, Adjustable Volume, 0.1 - 2.5uL, Red
MLS-3341-10	Pipette, Diamond Advance, Fully Autoclavable, Adjustable Volume, 0.5 - 10uL, Red
MLS-3341-20	Pipette, Diamond Advance, Fully Autoclavable, Adjustable Volume, 2 - 20uL, Red
MLS-3341-50	Pipette, Diamond Advance, Fully Autoclavable, Adjustable Volume, 5 - 50uL, Yellow
MLS-3341-100	Pipette, Diamond Advance, Fully Autoclavable, Adjustable Volume, 10 - 100uL, Blue
MLS-3341-200	Pipette, Diamond Advance, Fully Autoclavable, Adjustable Volume, 20 - 200uL, Lavender
MLS-3341-1000	Pipette, Diamond Advance, Fully Autoclavable, Adjustable Volume, 100 - 1000uL, Orange
MLS-3341-5000	Pipette, Diamond Advance, Fully Autoclavable, Adjustable Volume, 500 - 5000uL (0.5-5mL), Green

Diamond® Jr. Mini

CATALOG NO.	Desceiption
MLS-3322-5	Pipette, Diamond Jr., 5uL, Orange, Autoclavable
MLS-3322-10	Pipette, Diamond Jr., 10uL, Pink, Autoclavable
MLS-3322-20	Pipette, Diamond Jr., 20uL, Green, Autoclavable
MLS-3322-25	Pipette, Diamond Jr., 25uL, Green, Autoclavable
MLS-3322-35	Pipette, Diamond Jr., 35uL, Autoclavable
MLS-3322-50	Pipette, Diamond Jr., 50uL, Purple, Autoclavable
MLS-3322-100	Pipette, Diamond Jr., 100uL, Orange, Autoclavable



PIPETTORS

Diamond® Pro



CATALOG NO.	Desceiption
MLS-3312-5	Pipette, Diamond PRO, Fixed Volume, 5uL, Red
MLS-3312-10	Pipette, Diamond PRO, Fixed Volume, 10uL, Red
MLS-3312-20	Pipette, Diamond PRO, Fixed Volume, 20uL, Yellow
MLS-3312-25	Pipette, Diamond PRO, Fixed Volume, 25uL, Yellow
MLS-3312-50	Pipette, Diamond PRO, Fixed Volume, 50uL, Blue
MLS-3312-100	Pipette, Diamond PRO, Fixed Volume, 100uL, Lavender
MLS-3312-200	Pipette, Diamond PRO, Fixed Volume, 200uL, Lavender
MLS-3312-250	Pipette, Diamond PRO, Fixed Volume, 250uL, Orange
MLS-3312-500	Pipette, Diamond PRO, Fixed Volume, 500uL, Orange
MLS-3312-1000	Pipette, Diamond PRO, Fixed Volume, 1000uL (1mL), Light Green
MLS-3312-2000	Pipette, Diamond PRO, Fixed Volume, 2000uL (2mL), Light Green
MLS-3312-3000	Pipette, Diamond PRO, Fixed Volume, 3000uL (3mL), Light Green
MLS-3312-5000	Pipette, Diamond PRO, Fixed Volume, 5000uL (5mL), Light Green

Multi-Channel

CATALOG NO.	Desceiption
MLS-3354-10	0.5 - 10uL Pipette, Fully Autoclavable, 8-Channel, Adjustable Volume, Red
MLS-3354-20	2 - 20uL Pipette, Fully Autoclavable, 8-Channel, Adjustable Volume, Yellow
MLS-3354-50	5 - 50uL Pipette, Fully Autoclavable, 8-Channel, Adjustable Volume, Yellow
MLS-3354-100	10 - 100uL Pipette, Fully Autoclavable, 8-Channel, Adjustable Volume, Blue
MLS-3354-200	20 - 200uL Pipette, Fully Autoclavable, 8-Channel, Adjustable Volume, Lavender
MLS-3354-300	30 - 300uL Pipette, Fully Autoclavable, 8-Channel, Adjustable Volume, Orange



BOTTLETOP DISPENSERS

SCI-Spense bottle top dispensers are designed for safe and accurate dispensing of aggressive liquids. Unlike many other models, our dispensers are all fully autoclavable at temperatures up to 121°C, allowing thorough sterilization. Scilogex bottle dispensers also offer quick and precise volume adjustment and come supplied with an anti-drip cap to prevent accidental discharge. All our bottle top dispensers are easy to clean, and come supplied with a specialized tool to help with simple maintenance procedures. Importantly, the bottle top dispensers from Scilogex are all resistant to corrosive liquids and most acids.



DispensMate Plus Bottletop Dispensers

CATALOG NO.	DESCRIPTION
MLS-73110001	0.5-5mL SCI-Spense bottletop dispenser plus 5 adapters
MLS-73110002	1-10mL SCI-Spense bottletop dispenser plus 5 adapters
MLS-73110003	2.5-25mL SCI-Spense bottletop dispenser plus 5 adapters
MLS773110004	5-50mL SCI-Spense bottletop dispenser plus 5 adapters

Features:

- Fully autoclavable
- 4 sizes cover the volume range 0.5-50ml
- Quick and precise volume adjustment
- Ant-drip cap prevents accidental discharge
- Chemical resistant to most aggressive liquids and acids
- Dispensers come with adapters GL(25, GL28, GL32, GL38 & S40mm) to fit all common lab bottles
- 3 YEAR WARRANTY

Electronic Motorized Digital Bottletop Dispenser

CATALOG NO.	DESCRIPTION
MLS-73120105	0.5-10µliFlow Motorized LCD Digital Bottle Top Dispenser, 0.1-99.9ml, 110-240V, 50/60Hz, US plug

Features:

- High quality stepper motor provides smooth and accurate dispensing
- Recirculation feature minimizes waste when priming
- TFT display module for simple volume selection and control
- Comes with corded remote control to start and stop dispensing
- Comes with adjustable titrating nozzle with flexible length
- 45mm plus included adapters (GL25, GL28, GL32, GL38 & S40mm) to fit all common lab bottles
- 1 YEAR WARRANTY



BOTTLETOP DISPENSERS

Diamond® SureFlow™ Bottle Top Dispensers have been designed with several features to make the dispensing of your valuable laboratory reagents easier than ever. With your choice of standard or recirculating models, features include a unique piston design which allows cleaning and servicing without changing the calibration, and a springless valve which requires less maintenance, offers higher reliability and added chemical resistance. Dual graduations, volume lock and four additional bottle thread adapters are all standard. Recirculating models help eliminate the loss of your valuable reagents by priming without loss.



CATALOG NO.	DESCRIPTION
MLS-BTD-R-2.5	Bottle Top Dispenser, Diamond SureFlow, with Recirculation, 0.25mL to 2.5mL, 0.05mL increments
MLS-BTD-R-05	Bottle Top Dispenser, Diamond SureFlow, with Recirculation, 0.5mL to 5.0mL, 0.1mL increments
MLS-BTD-R-10	Bottle Top Dispenser, Diamond SureFlow, with Recirculation, 1.0mL to 10.0mL, 0.2mL increments
MLS-BTD-R-25	Bottle Top Dispenser, Diamond SureFlow, with Recirculation, 2.5mL to 25.0mL, 0.5mL increments
MLS-BTD-R-30	Bottle Top Dispenser, Diamond SureFlow, with Recirculation, 2.5mL to 30.0mL, 0.5mL increments
MLS-BTD-R-50	Bottle Top Dispenser, Diamond SureFlow, with Recirculation, 5.0mL to 50.0mL, 1.0mL increments
MLS-BTD-R-60	Bottle Top Dispenser, Diamond SureFlow, with Recirculation, 5.0mL to 60.0mL, 1.0mL increments
MLS-BTD-R-100	Bottle Top Dispenser, Diamond SureFlow, with Recirculation, 10.0mL to 100.0mL, 2.0mL increments

Features:

- **Fully autoclavable**
- **2-Year warranty**
- **Locking feature to prevent spills**
- **Single tool recalibrations**
- **360° Rotation to dispense in multiple vessels**
- **Ergonomic design for easy dispensing**
- **Simple operation**
- **Lower pressure for larger volumes helps reduce splashing**
- **Telescopic fill tube for bottles ranging in height from 170mm to 300mm**

RECIRCULATING CHILLERS

Our chillers are easy to drain and easy to clean. And you don't waste budget on frills your operators will never use. Every unit comes standard with a 2 year warranty



CATALOG NO.	DESCRIPTION
MLS-60321002209	SCIP5-Mini LED Recirculating Chiller, -20°C to ambient, 110V, 60Hz.

Features:

- **Temperature range: -20C to room temperature**
- **Employs PID temperature control with built-in PT1000 temperature sensor that provides high accuracy of temperature control**
- **A crystal-clear LED display that switches between display of set temperature and that of actual temperature**
- **The entire unit is capable of protection against short circuit, over-current, overload and delayed start**
- **Integrated design of drain outlet and water outlet that allows easy drainage**
- **The compressor employs state-of-the-art R290 environment-friendly refrigerant**
- **The liquid pathway is made of stainless steel or high-quality corrosion-resistant material**
- **User-friendly operating panel for easy operation**
- **A large-volume open reservoir allows easy filling and supports cold trap experiments**

PIPETTE FILLERS

Motorized Pipette Fillers



CATALOG NO.	SIZES
MLS-74020002	Levo Plus Motorized Pipette Filler, c/w wall stand, 2 x 0.45um filters and AC charging adapter

Features:

- LCD Display shows battery charge and coarse speed setting
- Lightweight ergonomic design
- Comfortable concave triggers
- 8 hour continuous use per charge
- For use with 1-100ml pipets
- Can fill a 25ml pipette in 5 seconds
- Touch sensitive triggers for fine speed control
- Gravity dispense, with blow-out for TD pipettes
- 0.45um & 0.2um hydrophobic filters
- Autoclavable nose-cone
- Powerful lithium-ion battery, no 'memory'
- Can be used while charging, no down-time
- 3 YEAR WARRANTY

CATALOG NO.	SIZES
MLS-74022002	SCILOGEX SCI-Fill2 Motorized Pipette Filler, including 2 x 0.45um Filters, AC Charger & Wall/Bench Stand, 110-220V, 50/60Hz, US plug

Features:

- Lightweight ergonomic design
- Comfortable concave triggers with fine speed control
- 8 hour continuous use per charge
- For use with 1-100ml pipets
- Can fill a 25ml pipette in 5 seconds
- Gravity dispense, with blow-out for TD pipettes
- Comes with 2 x 0.45um hydrophobic filters
- Autoclavable nose-cone
- Powerful lithium-ion battery, no 'memory'
- Can be used while charging, no down-time
- Comes with a charging base stand
- 1 YEAR WARRANTY



PIPETTE FILLERS

Manual Pipette Fillers

Levo is an easy-to-use serological pipette controller for use with 1-100ml serological pipettes. Simply attach a serological pipette into the silicone holder and squeeze the bulb (which creates a vacuum) and you are ready to pipette.



CATALOG NO.	COLOR
MLS-74010001	SCI-Pet Manual Pipette Filler - Blue
MLS-74010002	SCI-Pet Manual Pipette Filler - Red
MLS-74010003	SCI-Pet Manual Pipette Filler - Green
MLS-74010004	SCI-Pet Manual Pipette Filler - Yellow
MLS-74010005	SCI-Pet Manual Pipette Filler - Pink

Features:

- **Comfortable design**
- **Precise pipetting control**
- **Autoclavable silicone pipette holder**
- **Supplied with integral and replaceable 3µm filter**
- **Available in 5 great colors**
- **3 YEAR WARRANTY**

REPEATER PIPETTOR



CATALOG NO.	SIZES
MLS-72010000	SCIOGEX SCI-Mate Multi-Dispenser, 10ul to 50ml

Features:

- **Easy single-handed operation and volume setting**
- **Ideal for pipetting aqueous and viscous liquids**
- **Accessory EZ Polypropylene syringe tips available**
- **Uses most manufacturers syringe-tips**
- **Lightweight and ergonomic design**
- **Maintenance free**
- **1 YEAR WARRANTY**

OVERHEAD STIRRERS

TLCD and LED Digital overhead stirrer models offer considerable functionality that would not be available on a standard analog overhead stirrer. An accurate microprocessor controls stirring speed and guarantees precision in the speeds achieved by the laboratory stirrer, while an anti-spill microprocessor control ensures the slow start up of speed to prevent sample spills. The LED model provides a precise display of the actual speed which is selected via an analog dial.



LED Digital Overhead Stirrer

CATALOG NO.	DESCRIPTION
MLS-84020201	SCI40-S Overhead LED Digital Stirrer, 40L Capacity, 100-220V 50/60Hz, US Plug

LCD Digital Overhead Stirrer

CATALOG NO.	DESCRIPTION
MLS-84020301	SCI40-Pro Overhead LCD Digital Stirrer, 40L Capacity, 100-220V 50/60Hz, US Plug



LED Digital Overhead Stirrer

CATALOG NO.	DESCRIPTION
MLS-84010201	SCI20-S Overhead LED Digital Stirrer, 20L Capacity, 100-220V 50/60Hz, US Plug

LCD Digital Overhead Stirrer

CATALOG NO.	DESCRIPTION
MLS-84010301	SCI20-Pro Overhead LCD Digital Stirrer, 20L Capacity, 100-220V 50/60Hz, US Plug.



ANALYTICAL BALANCES



CATALOG NO.	MODELS
MLS-30100600	Analytical Balance AX124
MLS-30100601	Analytical Balance AX124/E
MLS-30100602	Analytical Balance AX224
MLS-83021331	Analytical Balance EX124
MLS-30061998	Analytical Balance EX224N/AD

CATALOG NO.	MODELS
MLS- 30430061	Analytical Balance PR224
MLS-30429837	Analytical Balance PX84
MLS- 30429845	Analytical Balance PX84/E

specifications:

- *These balances feature a color touchscreen, icon-based user interface, and an ergonomic design making them easy to configure and use.*
- *Balances are equipped with a weighing cell that's precision-machined from a solid metal block, Explorer balances are extremely accurate and durable, and are ideal for laboratory and industrial environments.*
- *There is a durable construction, large weighing surfaces, a space-saving draft shield design, and full housing in-use cover allow for use in lab, education and industrial environments.*
- *These possess detachable terminal with a large color touchscreen, programmable IR sensors, automatic doors, and a frameless draftshield make Explorer analytical balances easy and convenient to use.*

**Different Models are also available upon request.
Contact us for more details.**

PRECISION BALANCES



CATALOG NO.	MODELS
MLS-30100611	Precision Balance AX1502
MLS- 30100612	Precision Balance AX1502/E
MLS-30100613	Precision Balance AX2202
MLS-30100605	Precision Balance AX223
MLS-30122634	Precision Balance AX4201
MLS- 83021365	Precision Balance EX10201
MLS-83021361	Precision Balance EX6201
MLS-83021350	Precision Balance EX1103

specifications:

- *These balances feature a color touchscreen, icon-based user interface, and an ergonomic design making them easy to configure and use.*
- *Balances are equipped with a weighing cell that's precision-machined from a solid metal block, Explorer balances are extremely accurate and durable, and are ideal for laboratory and industrial environments.*
- *There is a durable construction, large weighing surfaces, a space-saving draft shield design, and full housing in-use cover allow for use in lab, education and industrial environments.*
- *These can be used for multiple purposes such as Formulation; Percent Weighing; Data Communication; Weigh Below; Counting and Density Determination*

**Different Models are also available upon request.
Contact us for more details.**

MOISTURE ANALYZERS



CATALOG NO.	MODEL	MAXIMUM CAPACITY	READABILITY	PAN SIZE
MLS-30241165	MB120 AM	120g	1 mg/0.01%	3.5 in (90 mm)
<p>The MB120 has the capability to produce fast and accurate results due to features such as a halogen heating system, customizable shut-off criteria and four built in drying profiles.</p>				

CATALOG NO.	MODEL	MAXIMUM CAPACITY	READABILITY	PAN SIZE
MLS-83999801	MB23 AM	110g	10 mg/0.1%	3.5 in (90 mm)
<p>The MB23 provides precise moisture content determination at an unbeatable value. The MB23 offers moisture analysis for any budget.</p>				



CATALOG NO.	MODEL	MAXIMUM CAPACITY	READABILITY	PAN SIZE
MLS-30251683	MB27 AM	90g	1 mg/0.01%	3.5 in (90 mm)
<p>The MB27 Basic Moisture Analyzer combines high quality and durable construction into a sleek, compact design. The MB27 offers dependable, accurate results for a wide variety of moisture analysis applications.</p>				

CATALOG NO.	MODEL	MAXIMUM CAPACITY	READABILITY	PAN SIZE
MLS-30241164	MB90 AM	90g	1 mg/0.01%	3.5 in (90 mm)
<p>The MB90's halogen heating distributes heat uniformly over the sample and speeds up the drying process, delivering fast and precise measurements. Operating the MB90 is intuitive with the icon-driven menu navigation on the touchscreen display.</p>				



PH METERS

Benchtop pH Meters



CATALOG NO.	MODEL	Measurement Range	Measurement Resolution
MLS-30589821	α-AB23PH -F	0 – 100°C; 0.00 – 14.00 pH; -1999 – 1999 mV	0.1 °C; 0.01 pH; 1 Mv
The model consist of Large bright LCD display with complete measurement information simplifies operation which allows to monitor the results from a distance.			

CATALOG NO.	MODEL	Measurement Range	Measurement Resolution
MLS- 30589826	α-AB33PH -B	-5 °C – 110 °C; -2.00 – 16.00 pH; -2000.00 – +2000.00 mV	0.1 °C; 0.01 pH; 1 Mv
It has Auto endpoint mode and auto buffer recognition thus making calibration easy. A 1000-item memory for pH measurements and calibration trail makes for efficient data documentation.			



Pen pH Meters



CATALOG NO.	MODEL	Measurement Range	Measurement Resolution
MLS-30073970	ST10	0.00 – 14 pH	0.1 Ph
MLS-30073971	ST20	0.0 – 99.0 °C; 0.00 – 14 pH	0.01 Ph
It has Auto endpoint mode and auto buffer recognition thus making calibration easy. A 1000-item memory for pH measurements and calibration trail makes for efficient data documentation.			

**Different Models are also available upon request.
Contact us for more details.**

JEWELRY SCALES



CATALOG NO.	MODEL	Measurement Range	Readability
MLS-30253056	Portable Balance SJX1502N/E	1,500 g	0.01 g
MLS- 30253057	Portable Balance SJX6201N/E	6,200 g	0.1 g
Designed for a wide range of Legal-for-Trade applications, the Class II and Class III certified SJX Carat and Gold balances are ideal for weighing jewelry, precious metals and gemstones.			

CATALOG NO.	MODEL	Measurement Range	Readability
MLS-30253054	Portable Precision Balance SJX323N/E	64 g	0.001 g
Equipped with superior overload protection, large backlit display, fast stabilization time, multiple weighing units, application modes and connectivity options, these slim balances offer a truly user-friendly weighing experience.			



CATALOG NO.	MODEL	Measurement Range	Readability
MLS-80251910	Portable Balance, YA102	100 g	0.01 g
The unique YA Series' weighing pan is integrated right into its carrying case, offering the ultimate combination of portability and protection. Just flip the case open and begin weighing.			

**Different Models are also available upon request.
Contact us for more details.**

CENTRIFUGE



CATALOG NO.	MLS-30553103
MODEL	FC5916R 120V
SPEED RANGE	200 rpm ; 16,000 rpm
MAXIMUM RELATIVE CENTRIFUGE FORCE (X G)	26,331 g
MAXIMUM CAPACITY(ROTOR)	4 x 750 ml

CATALOG NO.	MLS-30314818
MODEL	FC5816R 230V
SPEED RANGE	200 rpm ; 16,000 rpm
MAXIMUM RELATIVE CENTRIFUGE FORCE (X G)	24,325 g
MAXIMUM CAPACITY(ROTOR)	6 x 250 ml



CATALOG NO.	MLS-30314814
MODEL	FC5718R 230V
SPEED RANGE	200 rpm ; 18,000 rpm
MAXIMUM RELATIVE CENTRIFUGE FORCE (X G)	23,542 g
MAXIMUM CAPACITY(ROTOR)	4 x 100 ml

**Different Models are also available upon request.
Contact us for more details.**

CENTRIFUGE



CATALOG NO.	MLS-30130875
MODEL	FC5706 230V
SPEED RANGE	200 rpm ; 6,000 rpm
MAXIMUM RELATIVE CENTRIFUGE FORCE (X G)	4,427 g
MAXIMUM CAPACITY(ROTOR)	6 x 50 ml

CATALOG NO.	MLA-30314817
MODEL	FC5816 120V
SPEED RANGE	200 rpm ; 15,000 rpm
MAXIMUM RELATIVE CENTRIFUGE FORCE (X G)	21,379 g
MAXIMUM CAPACITY(ROTOR)	6 x 250 ml



CATALOG NO.	MLS-30393187
MODEL	FC5513 230V
SPEED RANGE	200 rpm ; 13,500 rpm
MAXIMUM RELATIVE CENTRIFUGE FORCE (X G)	17,317 g
MAXIMUM CAPACITY(ROTOR)	24 x 1.5 / 2.0 ml

**Different Models are also available upon request.
Contact us for more details.**

PRINTERS



CATALOG NO.	MLS-30064203
MODEL	SF40A
Printer Type	Impact Dot Matrix
INTERFACE TYPE	RS232
PRINT SPEED	1.2 lines per second

Features:

- The statistics and totalization modes and real time clock complement OHAUS weighing instruments' application modes and offer functionality that assists the reporting processes.
- SF40A helps support the efficiency of the weighing and recording processes. RS232 interface and PC configuration software make setting up and using the printer fast and simple.
- With the ability to print in 13 different languages, SF40A can print in the language of the connected device to support universal operation.

CATALOG NO.	MLS-80251992
MODEL	STP-103
Printer Type	Thermal



Features:

- This ultra-compact printer has a very small footprint and also features very low power consumption, requiring limited resources from your workspace.
- The extremely fast STP103 offers 42 column printing at a speed of approximately 11.8 lines per second.
- Loading paper into the printer is quick and easy and when the paper becomes low, the printer will suspend printing in order to prevent printing errors resulting from lack of paper.

FLOOR SCALES

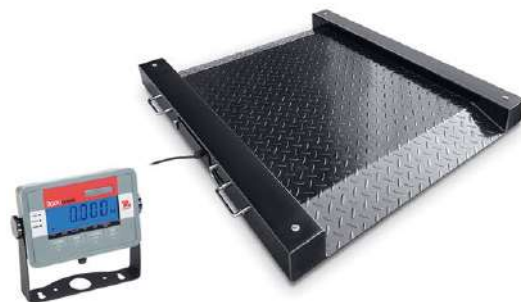
The VN Series of floor scales is the right choice for your basic dry weighing needs in industrial and commercial applications. Coupled with corresponding ramps, mounting accessories and T31P indicator, the OHAUS VN Series offers a unique combination of value, quality and dependability that your company can rely on.



CATALOG NO.	MODEL	MAXIMUM CAPACITY	READABILITY
MLS-80252563	VN31P5000L	5,000 lb (2,200 kg)	1 lb (0.5 kg)
MLS- 80252564	VN31P5000X	5,000 lb (2,200 kg)	1 lb (0.5 kg)
VN series is constructed of an epoxy painted steel frame, an ABS T31P indicator, NEMA 4X/IP65 sealed stainless steel junction box and IP67 sealed load cells. It possess rechargeable lead acid battery.			

The Defender 3000 Drum Scale is a durable portable floor scale designed for industrial applications. It features a mild steel platform with treads, built-in front/back access ramps, 4 load cells (with alloy steel feet & top leveling), and the popular T32M indicator for clear display of weighing results. For rapid portability, the base can be turned onto its side using the stainless steel handles and it can moved around the shop floor using the two built-in wheels.

CATALOG NO.	MODEL	MAXIMUM CAPACITY	READABILITY
MLS-30469912	DFD32M1000ER	1,000 lb (500 kg)	0.2 lb (0.1 kg)
MLS- 30469910	DFD32M1000ES	1,000 lb (500 kg)	0.2 lb (0.1 kg)
MLS-30469913	DFD32M2500ER	2,500 lb (1,250 kg)	0.5 lb (0.2 kg)
MLS-30469911	DFD32M2500ES	2,500 lb (1,250 kg)	0.5 lb (0.2 kg)
MLS-30469909	DFD32M500ES	500 lb (250 kg)	0.1 lb (0.05 kg)
The Drum Scales come in 5 models with platform sizes ranging from 30 x 30 to 36 x 36 inch. This series feature a platform constructed of mild steel with an epoxy paint finish, which means that the scale can stand up to heavy industrial use.			



**Different Models are also available upon request.
Contact us for more details.**

FLOOR SCALE PLATFORMS



Features:

- Durable epoxy painted steel frame and platform
- NEMA4X/IP65 sealed stainless steel junction box
- IP67 sealed loadcells

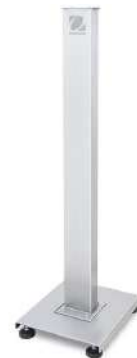
CATALOG NO.	MLS-80252561	MLS-80252562
MODEL	VN5000L	VN5000X
MAXIMUM CAPACITY	2,200 kg (5,000 lb)	2,200 kg (5,000 lb)
READABILITY	0.5 kg (1 lb)	0.5 kg (1 lb)
PLATFORM SIZE	1,219 mm (4 ft)x1,219 mm (4 ft)	1,524 mm (5 ft)x1,524 mm (5 ft)
PROTECTION RATING	IP67	IP67
PLATFORM CONSTRUCTION	Painted Steel Diamond Plate	Painted Steel Diamond Plate

ACCESSORIES



CATALOG NO.	DESCRIPTION
MLS-30531244	Column Kit Painted Floor Scale

CATALOG NO.	DESCRIPTION
MLS-30539553	Floor Scale Column Kit SST



**Different Models are also available upon request.
Contact us for more details.**

BENCH SCALES



CATALOG NO.	MODEL	MAXIMUM CAPACITY	READABILITY	PLATFORM SIZE
MLS-30685184	i-D33PI50BIL2 AM	150 kg	20 g	21.6x16.5 in
MLS-30685193	i-D33PI50BIX2 AM	150 kg	20 g	25.6x19.7 in
MLS-30685199	i-D33P300BIV3 AM	300 kg	50 g	31.5x23.6 in
MLS-30685194	i-D33P300BIX2 AM	300 kg	50 g	25.6x19.7 in
MLS-30685183	i-D33P75BIL2 AM	75 kg	10 g	21.6x16.5 in
MLS-30685200	i-D33P600BIV3 AM	600 kg	100 g	36.7x23.6 in
<p>This tough industrial scale features a 304-stainless steel platform, powder-coated steel tubular frame, and aluminum load cell. Indicator features a durable ABS housing and steel mounting bracket.</p>				

MODEL	MAXIMUM CAPACITY	READABILITY	PLATFORM SIZE
i-D33PI5BIR1 AM	15 kg	2 g	14x12 in
i-D33P30BIR1 AM	30 kg	5 g	14x12 in
i-D33P75BIR1 AM	75 kg	10 g	14x12 in
<p>This tough industrial scale features a 304-stainless steel platform, powder-coated steel tubular frame, and aluminum load cell. Indicator features a durable ABS housing and steel mounting bracket.</p>			



**Different Models are also available upon request.
Contact us for more details.**

BENCH SCALES



CATALOG NO.	MODEL	MAXIMUM CAPACITY	READABILITY	PLATFORM SIZE
MLS-30728938	i-D33P75SD	75 kg	0.02 kg	11x12.4 in
The Field Test Scale comes packaged in a durable plastic carrying case with latches and carrying handle, ensuring maximum portability for use anywhere on the job - without limiting you to the lab.				

CATALOG NO.	MODEL	MAXIMUM CAPACITY	READABILITY	PLATFORM SIZE
MLS-30685213	i-D33PI50B1L5 AM	150 kg	20 g	21.6x16.5 in
MLS-30685218	i-D33PI50B1X5 AM	150 kg	20 g	25.6x19.7 in
MLS-30685219	i-D33P300B1X5 AM	300 kg	50 g	25.6x19.7 in
MLS-30685212	i-D33P75B1L5 AM	75 kg	10 g	21.6x16.5 in
MLS-30685205	i-D33P75B1R5 AM	75 kg	10 g	14x12 in
MLS-30685206	i-D33XW15B1R5 AM	15 kg	2 g	14x12 in
This tough industrial scale features a 304-stainless steel platform, powder-coated steel tubular frame, and aluminum load cell. Indicator features a durable ABS housing and steel mounting bracket.				



CATALOG NO.	MODEL	MAXIMUM CAPACITY	READABILITY	PLATFORM SIZE
MLS-30575562	i-D61PW12K1R5	12.5 kg	1 g	11.8x11.8 in
MLS-30575568	i-D61PW5K1S5	5 kg	0.5 g	9.8x9.8 in
MLS-30608733	i-D61PW25K1R5	25 kg	2 g	11.8x11.8 in
MLS-30608735	i-D61PW150K1L5	150 kg	10 g	19.7x15.7 in
Large, bright backlit LCD clearly displays results for fast processing. The color bar can be used for quick checking of package weights for fast go/no-go alert.				

**Different Models are also available upon request.
Contact us for more details.**

BENCH SCALES



CATALOG NO.	MODEL	MAXIMUM CAPACITY	READABILITY	PLATFORM SIZE
MLS-30575570	i-D61PW12K1R6	12.5 kg	1 g	11.8x11.8 in
MLS-30626682	i-D61PW12WQR6	12.5 kg	0.5 g	12x12 in
Versatile scales include fast weight display and multiple software modes to meet food, chemical processing, and packaging needs.				

CATALOG NO.	MODEL	MAXIMUM CAPACITY	READABILITY	PLATFORM SIZE
MLS-30631719	i-D61XWE12WQR6	12.5 kg	0.5 g	12x12 in
MLS-30631721	i-D61XWE50WQR6	50 kg	2 g	12x12 in
MLS-30631707	i-D61XWE5WQS6	5 kg	0.2 g	10x10 in
White LED displays clear results for fast processing. The indicator's configurable color bar matrix allows for detailed package weight checking to ensure compliance.				



CATALOG NO.	MODEL	MAXIMUM CAPACITY	READABILITY	PLATFORM SIZE
MLS-30575567	i-D61XWE150K1L7	150 kg	10 g	19.7x15.7 in
MLS-30575566	i-D61XWE50K1L7	50 kg	5 g	19.7x15.7 in
Versatile scales include fast weight display and multiple software modes to meet food, chemical processing, and packaging needs.				

**Different Models are also available upon request.
Contact us for more details.**

COUNTING SCALES



CATALOG NO.	MODEL	MAXIMUM CAPACITY	READABILITY	PLATFORM SIZE
MLS-30031790	RC3IP15 AM	15 kg	0.5 g	8.9x11.8 in
MLS-30031787	RC3IP1502 AM	1.5 kg	0.05 g	8.9x11.8 in
MLS- 30031788	RC3IP3 AM	3 kg	0.1 g	8.9x11.8 in
MLS-30031791	RC3IP30 AM	30 kg	1 g	8.9x11.8 in
MLS-30031789	RC3IP6 AM	6 kg	0.2 g	8.9x11.8 in
Easy to use in multi-step counting operations. Features three backlit LCD displays, including a centrally located count display, and an easy-to-navigate menu.				

CATALOG NO.	MODEL	MAXIMUM CAPACITY	READABILITY	PLATFORM SIZE
MLS-30236941	RC4IM15 AM	15 kg	0.5 g	8.9x11.8 in
MLS-30236779	RC4IM3 AM	3 kg	0.1 g	8.9x11.8 in
MLS-30236942	RC4IM30 AM	30 kg	1 g	8.9x11.8 in
MLS-30236940	RC4IM6 AM	6 kg	0.2 g	8.9x11.8 in
Sturdy metal housing and slip-resistant rubber feet provide the protection, stability and long product life needed for tough industrial weighing. Accurate weighing and counting performance is assured with 1:1,500,000 internal counting resolution and auto-optimization software that reduces errors.				



**Different Models are also available upon request.
Contact us for more details.**

COMPACT BENCH SCALES



CATALOG NO.	MODEL	MAXIMUM CAPACITY	READABILITY	PLATFORM SIZE
MLS-83998138	C11P20 AM	20 kg	0.01 kg	11x12.4 in
MLS-83998139	C11P75 AM	75 kg	0.05 kg	11x12.4 in
MLS- 83998137	C11P9 AM	9 kg	0.005 kg	11x12.4 in

The sturdy ABS plastic housing and platform with optional stainless steel platform make Catapult® 1000 sturdy yet easy to maneuver and fit into your workspace. Catapult 1000 not only provides accurate general weight determination but also has the software to support dynamic/animal weighing.

CATALOG NO.	MODEL	MAXIMUM CAPACITY	READABILITY	PLATFORM SIZE
MLS-30554444	V12P10T AM	10 kg	1 g	9.65x7.48 in
MLS- 30539392	V12P15 AM	15 kg	2 g	9.65x7.48 in
MLS-30554445	V12P20T AM	20 kg	2 g	9.65x7.48 in
MLS-30554442	V12P2T AM	2 kg	0.2 g	9.65x7.48 in
MLS-30539390	V12P3 AM	3 kg	3 kg	9.65x7.48 in
MLS-30539393	V12P30 AM	30 kg	5 g	9.65x7.48 in
MLS-30554443	V12P5T AM	5 kg	0.5 g	9.65x7.48 in
MLS-30539391	V12P6 AM	6 kg	1 g	9.65x7.48 in

NSF-certified and USDA AMS-accepted design supports HACCP systems, making Valor 1000 perfect for food preparation tasks. Stainless steel pans and plastic in-use covers available for extra protection. Intuitive two-button operation allows for quick weight checking to simplify repetitive operations and increase operator efficiency.



**Different Models are also available upon request.
Contact us for more details.**

COMPACT BENCH SCALES



CATALOG NO.	MODEL	MAXIMUM CAPACITY	READABILITY	PLATFORM SIZE
MLS-30031710	R3IP15 AM	15 kg	0.5 g	8.9x11.8 in
MLS-30031707	R3IP1502 AM	1.5 kg	0.05 g	8.9x11.8 in
MLS-30031708	R3IP3 AM	3 kg	0.1 g	8.9x11.8 in
MLS-30031711	R3IP30 AM	30 kg	1 g	8.9x11.8 in
MLS-30031709	R3IP6 AM	6 kg	0.2 g	8.9x11.8 in
<p>With the largest display in its class, check weighing LED indicators and backlit LCD display, the Ranger 3000 can function in any industrial environment. User-friendly scale with easy setup to ensure efficiency in the workplace. Eliminate waiting time and increase control of your operation with accurate one-second results.</p>				

CATALOG NO.	MODEL	MAXIMUM CAPACITY	READABILITY	PLATFORM SIZE
MLS-30236775	R4IME3 AM	3 kg	0.1 g	8.9x11.8 in
MLS- 30236778	R4IME30 AM	30 kg	1 g	8.9x11.8 in
MLS- 30236776	R4IME6 AM	6 kg	0.2 g	8.9x11.8 in
MLS-30236777	R4IME15 AM	15 kg	0.5 g	8.9x11.8 in
<p>Sturdy metal housing and slip-resistant rubber feet provide the protection, stability and long product life needed for tough industrial weighing. The most user-friendly scale on the market features Smart Text™ for easy operation and setup to ensure efficiency in the workplace.</p>				



**Different Models are also available upon request.
Contact us for more details.**

COMPACT BENCH SCALES



CATALOG NO.	MODEL	MAXIMUM CAPACITY	READABILITY	PLATFORM SIZE
MLS-30070311	R71MD15 AM	15 kg	0.2 g	12.2x14.8 in
MLS-30070312	R71MD35 AM	35 kg	0.5 g	12.2x14.8 in
MLS-30212873	R71MD60 AM	60 kg	1 g	12.2x14.8 in
<p>Simplify complex applications and minimize the need for manual calculations with 10 advanced application modes, peripheral device control and an optional kit for a second scale platform. Extremely durable scale designed to thrive in rugged industrial environments. Features IP54-rated metal housing and sealed metal terminal.</p>				

CATALOG NO.	MODEL	MAXIMUM CAPACITY	READABILITY	PLATFORM SIZE
MLS-30088841	R71MHD6 AM	6 kg	0.02 g	8.3x8.3 in
MLS- 30088840	R71MHD3 AM	3 kg	0.01 g	8.3x8.3 in
<p>Sturdy metal housing and slip-resistant rubber feet provide the protection, stability and long product life needed for tough industrial weighing. The most user-friendly scale on the market features Smart Text™ for easy operation and setup to ensure efficiency in the workplace.</p>				



CATALOG NO.	MODEL	MAXIMUM CAPACITY	READABILITY	PLATFORM SIZE
MLS- 30035685	V22PWE15T AM	15 kg	2 g	7.5x9.5 in
MLS-30070312	V22PWE30T AM	30 kg	5 g	7.5x9.5 in
MLS-30035684	V22PWE6T AM	6 kg	1 g	7.5x9.5 in
<p>The sturdy polycarbonate keypad offers protection from knives and other sharp instruments used in food preparation, processing and portioning applications. A unique IPX8 flow-thru design ensures that the NSF-certified Valor 2000 will drain moisture in the scale when used in wet conditions.</p>				

**Different Models are also available upon request.
Contact us for more details.**

INDICATORS



CATALOG NO.	MODEL	RESOLUTION	DIMENSIONS		
			LENGTH	WIDTH	HEIGHT
MLS-30659310	i-DT33P AM	30,000	9.9 in	3.2 in	7 in
MLS-30648433	i-DT33P AM EZ	30,000	9.9 in	3.2 in	7 in
<p>Results are clearly shown using the large, bright backlit LCD display. In Checkweighing mode, the display changes color (yellow/green/red) to alert when it is within the target weight range. Features software for Parts Counting, Checkweighing, and Totalization. Includes RS232 with optional USB Device or Ethernet for printing or data connectivity.</p>					

CATALOG NO.	MODEL	RESOLUTION	DIMENSIONS		
			LENGTH	WIDTH	HEIGHT
MLS-30659311	i-DT33XW AM	30,000	10.1 in	2.9 in	8 in
MLS-30678638	i-DT33XW AM EZ	30,000	10.1 in	2.9 in	8 in
<p>Results are clearly shown using the large, bright backlit LCD display. In Checkweighing mode, the display changes color (yellow/green/red) to alert when it is within the target weight range. Features software for Parts Counting, Checkweighing, and Totalization. Includes RS232 with optional USB Device or Ethernet for printing or data connectivity.</p>					



CATALOG NO.	MODEL	RESOLUTION	DIMENSIONS		
			LENGTH	WIDTH	HEIGHT
MLS-30575583	i-DT61PW AM	75,000	8.9 in	3.3 in	10.4 in
<p>Defender 6000 indicator, constructed of polycarbonate, stands up to harsh cleaning in processing and packaging environments with IP68 immersion/IP69K washdown protection. Large, bright backlit LCD clearly displays results for fast processing. The color bar can be used for quick checking of package weights for fast go/no-go alert. Indicator operates for up to 1,600 hours on one set of batteries for months of use. Battery-powered design eliminates the need for a main connection for increased flexibility.</p>					

**Different Models are also available upon request.
Contact us for more details.**

INDICATORS



CATALOG NO.	MODEL	RESOLUTION	DIMENSIONS		
			LENGTH	WIDTH	HEIGHT
MLS-30575584	i-DT61XWE AM	75,000	9.3 in	3.1 in	11.4 in
<p>Results are clearly shown using the large, bright backlit LCD display. In Checkweighing mode, the display changes color (yellow/green/red) to alert when it is within the target weight range. Features software for Parts Counting, Checkweighing, and Totalization. Includes RS232 with optional USB Device or Ethernet for printing or data connectivity.</p>					

CATALOG NO.	MODEL	RESOLUTION	DIMENSIONS		
			LENGTH	WIDTH	HEIGHT
MLS-30424078	TD52P AM	75,000	10.4 in	3 in	7.6 in
<p>See results clearly on the large backlit display. The alphanumeric keypad & function keys allow for a simplified user experience. On-screen prompts and soft keys will guide you through the operation. Analog Output & Discrete I/O with relays. Features common industrial modes & supports a 50,000 item library & 1,000 user profiles which can be downloaded/uploaded for easy set-up (with SD Card). GMP/GLP with time/date for result traceability.</p>					



CATALOG NO.	MODEL	RESOLUTION	DIMENSIONS		
			LENGTH	WIDTH	HEIGHT
MLS-83998167	T32MC AM	20,000	7.6 in	8.7 in	1.8 in
<p>Application modes include weighing, simple parts counting, basic checkweighing, dynamic weighing and accumulation of results. Constructed of painted steel housing and high-impact ABS faceplate, T32MC and T32ME are highly durable.</p>					

**Different Models are also available upon request.
Contact us for more details.**

INDICATORS



CATALOG NO.	MODEL	RESOLUTION	DIMENSIONS		
			LENGTH	WIDTH	HEIGHT
MLS-83999839	T71XW AM	50,000	8.3 in	10.3 in	3 in
<p>This advanced indicator has dual-scale capabilities in which it can display the weights from two platforms and is powerful enough to drive up to 8 - 350 ohm load cells per platform. With a full alphanumeric keypad and dual-line display, as well as SmarText™ software that utilizes text prompts to guide users through set up and use, T71XW is simple to operate.</p>					

CATALOG NO.	MODEL	RESOLUTION	DIMENSIONS		
			LENGTH	WIDTH	HEIGHT
MLS-30126959	T72XW AM	50,000	3.4 in	11.1 in	9.1 in
<p>Two option slots are available to enable a wide range of connectivity interfaces. Control external devices using the discrete I/O interface and transfer data through the serial, USB or Ethernet ports. T72XW is very easy to set up and navigate - featuring a vivid graphic display with on-screen prompts and an alphanumeric keypad with designated keys for common functions such as Tare & ID information</p>					



CATALOG NO.	MODEL	RESOLUTION	DIMENSIONS		
			LENGTH	WIDTH	HEIGHT
MLS-30424079	TD52XW AM	75,000	10.6 in	3 in	8.7 in
<p>Results can be stored in the Micro SD card. Data output via built-in RS232 or optional interfaces including RS232/RS485/USB device, Ethernet & Bluetooth/WiFi. Analog Output & Discrete I/O with relays. Features common industrial modes & supports a 50,000 item library & 1,000 user profiles which can be downloaded/uploaded for easy set-up (with SD Card). GMP/GLP with time/date for result traceability.</p>					

**Different Models are also available upon request.
Contact us for more details.**

REFRACTOMETERS

Handheld brix refractometers

CATALOG NO.	MODEL	BRIX RANGE	RESOLUTION	ACCURACY	ATC
MLS-43001	BX-1	0-32%	0.2%	±0.2%	No
MLS-43002	BTX-1	0-32%	0.2%	±0.2%	Yes
MLS-43003	BX-2	28-62%	0.2%	±0.2%	No
MLS-43005	BX-3	58-92%	0.2%	±0.2%	No
MLS-43007	BX-4	45-82%	0.2%	±0.2%	No
MLS-43009	BX-10	0-10%	0.1%	±0.1%	No
MLS-43011	BX-20	0-20%	0.1%	±0.1%	No
MLS-43012	BTX-20	0-20%	0.1%	±0.1%	Yes
MLS-43015	BX-50	0-50%	0.5%	±0.5%	No
Our Handheld Brix Refractometers are exceptionally simple to operate and provide quick, accurate measurements for the concentration of nearly any aqueous solution.					



Beer Wort Brix Refractometer

CATALOG NO.	MODEL	BRIX AND SG BEER WORT RANGE	ATC
MLS-43004	SGX-1	0 to 32% / 1.000 to 1.130	Yes
The Beer Wort Brix Refractometer features two scales - Brix and Beer Wort Specific Gravity. It is simple to operate and provides quick, accurate measurements for Specific Gravity of beer wort.			



Features:

- Large, Sharp Display Scales with high contrast
- High-quality optical glass material for consistent, accurate readings
- Durable, industrial-grade design with non-roll stand feature to keep unit secure on flat surfaces
- Tactical, non-slip Rubber Grip on body to block transmission of hand heat reducing temperature effects
- Prism encased in all-metal housing allowing sample and prism to reach temperature equilibrium quickly

**Different Models are also available upon request.
Contact us for more details.**

REFRACTOMETERS

Handheld Sodium Chloride Refractometers

CATALOG NO.	MODEL	RANGE	ATC
MLS-43033	SX-1	0 to 10%	No
MLS-43035	SX-2	0 to 28%	No
Handheld Sodium Chloride (NaCl) Refractometers are exceptionally simple to operate and provide quick, accurate measurements for the concentration of nearly any aqueous solution.			



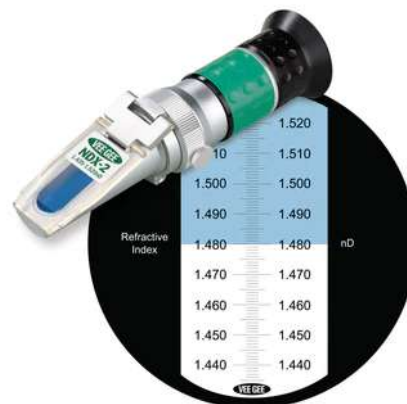
Handheld Salinity Refractometer

CATALOG NO.	MODEL	RANGE	ATC
MLS-43036	STX-3	0-100 ppt / 1.000-1.070 specific gravity	Yes
A salinity refractometer measures the concentration of salt, such as sodium chloride, magnesium and calcium sulfates, in liquids and displays the results. Each order comes with a zippered vinyl carrying case, a plastic transfer pipet, and an instruction manual.			



Handheld Refractive Index Refractometer

CATALOG NO.	MODEL	RANGE	ATC
MLS-43055	NDX-2	1.435 to 1.520	No
Handheld Refractive Index Refractometer is exceptionally simple to operate and provides quick, accurate measurements for the concentration of nearly any aqueous solution.			



Features:

- Large, Sharp Display Scales with high contrast
- High-quality optical glass material for consistent, accurate readings
- Durable, industrial-grade design with non-roll stand feature to keep unit secure on flat surfaces
- Tactical, non-slip Rubber Grip on body to block transmission of hand heat reducing temperature effects
- Prism encased in all-metal housing allowing sample and prism to reach temperature equilibrium quickly.

**Different Models are also available upon request.
Contact us for more details.**

REFRACTOMETERS

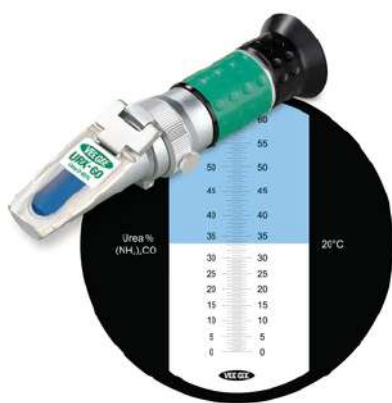
Handheld Coolant/Battery Acid Refractometers



CATALOG NO.	FREEZING POINT OF PROPYLENE GLYCOL	FREEZING POINT OF ETHYLENE GLYCOL	SPECIFIC GRAVITY OF BATTERY ACID	FREEZING POINT OF PROPYLENE GLYCOL
MLS-43062	-50 to 0°C	-50 to 0°C	1.10 to 1.40	-50 to 0°C
MLS-43064	-50 to 32 F	-60 to 32°F	1.10 to 1.40	-50 to 32 F

The CTX-1 and CTX-2 are handheld, portable, water-resistant antifreeze and battery charge level refractometers that measure the freezing point of propylene glycol, the freezing point of ethylene glycol, and the specific gravity of battery acid. They both have automatic temperature compensation (ATC), and a durable metal body with rubber grip.

Handheld Urea Refractometer



CATALOG NO.	MODEL	RANGE	ATC
MLS-43071	URX-60	0-60%	No

Handheld Urea Refractometers are exceptionally simple to operate and provide quick, accurate measurements for the concentration of nearly any aqueous solution.

Features:

- Large, Sharp Display Scales with high contrast
- High-quality optical glass material for consistent, accurate readings
- Durable, industrial-grade design with non-roll stand feature to keep unit secure on flat surfaces
- Tactical, non-slip Rubber Grip on body to block transmission of hand heat reducing temperature effects
- Prism encased in all-metal housing allowing sample and prism to reach temperature equilibrium quickly

**Different Models are also available upon request.
Contact us for more details.**

REFRACTOMETERS

Digital Brix/Refractive Index Refractometers



Our Portable Digital Refractometers deliver digital accuracy and high-end features for specific applications. Brix and Refractive Index scales can be used in a wide variety of industries including: food & beverage, industrial, waste-water, aquatics, and many more.

CATALOG NO.	MLS-48101	MLS-48102
MODEL	MDX-101	MDX-102
SCALE 1 TYPE	Brix	Brix
SCALE 1 RANGE	0.0 to 50.0%	0.0 to 90.0%
SCALE 1 RESOLUTION	0.1%	0.1%
SCALE 1 ACCURACY	±0.2%	±0.2%
SCALE 2 TYPE	Refractive Index	Refractive Index
SCALE 2 RANGE	1.3330 to 1.4200nD	1.3330 to 1.5300nD
SCALE 2 RESOLUTION	0.0001nD	0.0001nD
SCALE 2 ACCURACY	±0.0003nD	±0.0003nD

Features:

- Compact & lightweight
- Removable grip & prism cover for easy cleaning
- Continuous loop read features (15 reads)
- Automatic Temperature Control
- Zero with distilled water
- IP67 rating for detecting unit, IP65 for remainder
- 589.3nm LED
- Stainless steel prism well
- °C/°F switchable temperature display
- 1 Year Warranty

**Different Models are also available upon request.
Contact us for more details.**

REFRACTOMETERS

Digital Seawater Refractometers



CATALOG NO.	MLS-48202
MODEL	MDX-202
SCALE 1 TYPE	Salinity
SCALE 1 RANGE	0 to 100 ppt
SCALE 1 RESOLUTION	1 ppt
SCALE 1 ACCURACY	±2 ppt
SCALE 2 TYPE	Chlorinity
SCALE 2 RANGE	0 to 57 ppt
SCALE 2 RESOLUTION	1 ppt
SCALE 2 ACCURACY	±2 ppt

SCALE 3 TYPE	Specific Gravity
SCALE 3 RANGE	1.000 to 1.075
SCALE 3 RESOLUTION	0.001
SCALE 3 ACCURACY	±0.002
SCALE 4 TYPE	Refractive Index
SCALE 4 RANGE	1.3330 to 1.4200 nD
SCALE 4 RESOLUTION	0.0001 nD
SCALE 4 ACCURACY	±0.0003 nD
OUR PORTABLE DIGITAL REFRACTOMETERS DELIVER DIGITAL ACCURACY AND HIGH-END FEATURES FOR SPECIFIC APPLICATIONS. DIGITAL SEAWATER REFRACTOMETERS CAN BE USED TO MEASURE SALINITY IN THE AQUATICS INDUSTRY.	

Features:

- Includes 4 scales (Salinity, Chlorinity, Specific Gravity, & Refractive Index)
- Compact & lightweight
- Removable grip & prism cover for easy cleaning
- Continuous loop read features (15 reads)
- Automatic Temperature Control
- Zero with distilled water
- IP67 rating for detecting unit, IP65 for remainder.

**Different Models are also available upon request.
Contact us for more details.**

REFRACTOMETERS

Digital Urea (DEF) and Battery acid Refractometers



CATALOG NO.	MLS-48602
MODEL	MDX-602
SCALE 1 TYPE	DEF (Urea)
SCALE 1 RANGE	0 to 55%
SCALE 1 RESOLUTION	0.1%
SCALE 1 ACCURACY	±0.2%
SCALE 2 TYPE	Refractive Index
SCALE 2 RANGE	1.3330 to 1.4200 nD
SCALE 2 RESOLUTION	0.001 nD
SCALE 2 ACCURACY	±0.0003 nD
SCALE 3 TYPE	Battery Acid
SCALE 3 RANGE	1.000 to 1.500 s.g.
SCALE 3 RESOLUTION	0.001 s.g.
SCALE 3 ACCURACY	±0.005 s.g.

our digital urea (DEF) and battery acid refractometer has 3 scales. It measures urea (DEF), refractive index, and battery acid. It's used to ensure compliance with remissions for diesel fuel powered vehicles. This unit will also monitor the strength of battery acid and specific gravity. Common applications for this refractometer include the trucking industry, farm/agriculture equipment, construction equipment, and other vehicles that use diesel fuel.

Features:

- *Compact & lightweight*
- *Removable grip & prism cover for easy cleaning*
- *Continuous loop read features (15 reads)*
- *Automatic Temperature Control*
- *Zero with distilled water*
- *IP67 rating for detecting unit, IP65 for remainder*
- *589.3nm LED*
- *Stainless steel prism well*
- *°C/°F switchable temperature display*
- *1 Year Warranty*

**Different Models are also available upon request.
Contact us for more details.**

HYDROMETERS

Brix Hydrometers

CATALOG NO.	BRIX RANGE
MLS-6601-1	0 to 12°
MLS-6601-2	9 to 21°
MLS-6606-3	19 to 31°
MLS-6601-4	29 to 41°
MLS-6601-5	39 to 51°

CATALOG NO.	BRIX RANGE
MLS-6601-10	0 to 35°
MLS-6601-11	35 to 70°
MLS-6601-13	-5 to 5°
MLS-6601-14	5 to 15°
MLS-6601-15	15 to 25°



Features:

- *Calibrated to show percent sucrose by weight*
- *Wide variety of Brix Ranges available*
- *Approximate length of 330 mm*

Baume Hydrometers



CATALOG NO.	BRIX RANGE	SUBDIVISION
MLS-6609-1	0 to 12°	0.1°
MLS-6609-2	9 to 21°	0.1°
MLS-6609-3	19 to 31°	0.1°
MLS-6609-4	29 to 41°	0.1°
MLS-6609-5	39 to 51°	0.1°
MLS-6609-8	0 to 15°	0.1°

CATALOG NO.	BRIX RANGE	SUBDIVISION
MLS-6609-9	0 to 25°	0.2°
MLS-6609-10	0 to 35°	0.5°
MLS-6609-11	0 to 50°	0.5°
MLS-6609-12	35 to 70°	0.5°
MLS-6609-13	0 to 50°	1.0°
MLS-6609-14	0 to 70°	1.0°

Features:

- *Wide variety of Baume Ranges available*
- *Approximate length of 305mm*

**Different Models are also available upon request.
Contact us for more details.**

HYDROMETERS

IRS Alcohol Hydrometers

Our certified alcohol hydrometers are three point certified to IRS standards for proof, tolerances, and NIST traceability. These hydrometers are commonly used in distilleries that require certification. Each hydrometer comes with a laminated NIST-traceable certificate of calibration and a protective PVC case.



CATALOG NO.	PROOF RANGE	SUBDIVISION	TOLERANCE	I.R. SIZE
MLS-6613-B-C	80 to 120%	0.5%	±0.5%	B
MLS-6613-F-C	0 to 20%	0.2%	±0.3%	F
MLS-6613-G-C	20 to 40%	0.2%	±0.4%	G
MLS-6613-H-C	40 to 60%	0.2%	±0.4%	H
MLS-6613-I-C	60 to 80%	0.2%	±0.3%	I
MLS-6613-K-C	75 to 95%	0.2%	±0.3%	K
MLS-6613-L-C	90 to 110%	0.2%	±0.3%	L
MLS-6613-M-C	105 to 125%	0.2%	±0.3%	M
MLS-6613-N-C	125 to 145%	0.2%	±0.3%	N
MLS-6613-P-C	145 to 165%	0.2%	±0.3%	P
MLS-6613-Q-C	165 to 185%	0.2%	±0.2%	Q
MLS-6613-R-C	185 to 206%	0.2%	±0.2%	R

**Different Models are also available upon request.
Contact us for more details.**

HYDROMETERS

Wide Range Specific Gravity Hydrometers

Our Wide Range Specific Gravity Hydrometers are ideal when you aren't sure of the approximate value of your liquid. They can also be used for multiple liquids with different specific gravity within the range of the hydrometer, allowing multiple uses with one unit. All of our specific gravity hydrometers are calibrated at 60°F.

CATALOG NO.	SPECIFIC GRAVITY RANGE	SUBDIVISIONS	LENGTH
MLS-6604-1	1.000 to 1.250	0.005	6.5 in
MLS-6604-2	1.200 to 1.450	0.005	6.5 in.
MLS-6604-3	1.400 to 1.650	0.005	6.5 in
MLS-6604-4	1.600 to 1.850	0.005	6.5 in.
MLS-6604-5	1.800 to 2.050	0.005	6.5 in



Specific Gravity and Baume Dual Scale Hydrometer

Our Specific Gravity and Baume Dual Scale Hydrometers have two scales on the stem, covering different applications with one unit. Specific Gravity, also known as relative density, is the ratio of the mass of a liquid to the mass of an equal volume of distilled water. The Baume scale has two different scales: one for liquids heavier than water and one for liquids lighter than water.

CATALOG NO.	SPECIFIC GRAVITY - BAUME RANGE	LENGTH
MLS-6604DS-04	0.70 to 1.00 / 70° to 10° Light	165mm



**Different Models are also available upon request.
Contact us for more details.**

MICROSCOPES

COMPOUND MICROSCOPES

Our Compound Microscopes have vivid, infinity-corrected optics and offer exceptionally high optical flatness and visual clarity. Ultra-low focusing controls and advanced ergonomics make them an excellent match for use in medical/veterinary clinics, universities, and industrial laboratories.

Choose from binocular or trinocular viewing heads. Various camera packages are available as options.

All models feature 10X High-Eyepoint Wide Field eyepieces, 20W variable quartz halogen illumination, field diaphragms for Koehler illuminations, and are backed by a 5-Year Warranty.



CATALOG NO.	TYPE	HEAD	OBJECTIVE TYPE
MLS-1321Bri	Brightfield	Binocular	Plan Achromatic
MLS-1331Bri	Brightfield	Trinocular	Plan Achromatic
MLS-1323PHI	Phase Contrast/Darkfield/Brightfield	Binocular	Plan Achromatic
MLS-1333PHI	Phase Contrast/Darkfield/Brightfield	Trinocular	Plan Achromatic

STEREO MICROSCOPES

Our Stereo Microscopes features precision optics to ensure the highest level of performance for inspection and dissection. All models also come with upper and lower LED illumination to provide the brightest and most energy-efficient lighting available on the market.

Select from binocular and trinocular heads which produce high-resolution, three-dimensional images. Various camera packages are available as options; including digital and video.

All models feature 10X Extra Wide Field eyepieces and are backed by 5-Year warranties. Optional eyepieces are available to customize any model for specific magnification requirements.



CATALOG NO.	HEAD	TOTAL MAGNIFICATION
MLS-1353SL	Binocular	10X and 30X

**Different Models are also available upon request.
Contact us for more details.**

MICROSCOPES

Student Stereo Microscope



Our versatile 10x/30x stereo microscope features three-way LED illumination (top, bottom, or both), paired 10x WF eyepieces, and 1x/3x objectives on a rotatable turret. The head is rotatable 360° and can be rotated on its mounting pole to view objects too large for the stage. Includes a frosted glass stage plate, reversible black/white stage plate, two metal stage clips, and a vinyl dust cover.

CATALOG NO.	DESCRIPTION
MLS-MCR002	10X and 30X

Features:

- **Viewing Head:** Binocular head inclined at 45°. Rotatable 360°. Adjustable interpupillary distance from 55 to 75mm
- **Eyepiece:** Paired WF 10x eyepieces, one with diopter adjustment. Includes rubber eyecups
- **Objectives:** 1x, 3x (for 10x and 30x magnification)
- **Stage:** Plain, 100 x 105mm with slide clips
- **Condenser:** Single lens with disc diaphragm
- **Focusing:** Coarse adjustment knobs
- **Bulbs:** LED
- **Power:** 110V

Prism Microscope

Our durable introductory microscope is ideal for classroom or field use. The microscope body, viewing tube and stage are constructed of cast metal. Light-gathering Lucite prism provides sub-stage illumination, without the need for electricity, by using ambient or room light. 40x magnification is provided by a widefield 10x eyepiece and 4x objective. Tilt mechanism enables users to adjust the angle of the viewing tube while slides are held securely in place by spring-loaded stage clips. Microscope dimensions are 10.5"H x 4"W x 5.5"D.

CATALOG NO.	DESCRIPTION
MLS-MCRPR1	PRISM MICROSCOPE, 40X



**Different Models are also available upon request.
Contact us for more details.**

MICROSCOPE CAMERAS

High-Definition Digital Cameras produce high definition live images and video for the documentation and archival of clinical, life science, and material science laboratory imaging analysis. With resolution up to 3856 x 2764 and the included software, the IS series cameras are a perfect match for many science applications.

Equipped with ½", 1/2.5", or 1/2.3" CMOS image sensors, Vanguard ISH-Series Digital Cameras deliver exacting image clarity and color. The on-chip 8 bit A/D converter is capable of operating at up to 40fps. IS-Series digital cameras come standard with the following features: still & video capture modes, automatic/manual exposure control, manual gamma control, and automatic/manual balance control.

The compact design and standard C-mount lens adapter of the ISH-Series cameras allows them to be easily installed on essentially any microscope with an existing camera port or available eyetube. No separate power cable is required for the ISH-Series cameras; video, power, and full camera control are all enabled with a single USB cable.

The full-featured imaging software allows the user to easily control all of the camera's advanced settings and has a simple but powerful graphic interface. Full capture solutions are included to provide the user with the ultimate in live image analysis and archival.



Features:

- **3MP, 5MP, or 10MP Models**
- **Up to 3856 x 2764 Resolution**
- **High Speed USB 3.0 Interface**
- **½" or 1/2.5" CMOS Image Sensors**
- **Live Image Analysis**
- **Still and Video Capture Modes**
- **Automatic Exposure & White Balance**
- **8-Bit A/D Converter**
- **IS Capture Software**

CATALOG NO.	RESOLUTION
MLS-M1397-K009-1	10 Megapixels
MLS-M1397-K010-1	10 Megapixels
MLS-1400-CDPC-10	10 Megapixels
MLS-M1397-K007-1	5 Megapixels
MLS-M1397-K008-1	5 Megapixels
MLS-1400-CDPC-5	5 Megapixels
MLS-M1397-K005-1	3 Megapixels
MLS-M1397-K006-1	3 Megapixels
MLS-1400-CDPC-3	3 Megapixels
MLS-1400-CDPC-5	5 Megapixels

THERMOMETERS

Dial Thermometers

CATALOG NO.	TEMPERATURE RANGE	SUBDIVISION	LENS MATERIAL
MLS-81070	-40 to +70°C	1°C	Polycarbonate
MLS-81110	-10 to +110°C	1°C	Polycarbonate
MLS-81125	25 to 125°F	1°F	Polycarbonate
MLS-81550	0 to 150°C	2°C	Polycarbonate



Oven thermometers

Partial Immersion: 76mm (3")

CATALOG NO.	H-B NO.	RANGE	DIVISIONS	ACCURACY	LENGTH
MLS-B60803-0600	6/2220	0/200°C	1°C	±2°C, ±2.5°C above 100°C	280mm

Partial Immersion: 125mm (4.9")

CATALOG NO.	H-B NO.	RANGE	DIVISIONS	ACCURACY	LENGTH
MLS-B60803-0700	6/0200	0/200°C	1°C	±2°C, ±2.5°C above 100°C	400mm
MLS-B60803-0800	6/2222	0/200°C	1°C	±2°C, ±2.5°C above 100°C	400mm

Total Immersion

CATALOG NO.	H-B NO.	RANGE	DIVISIONS	ACCURACY	LENGTH
MLS-B60803-0900	6/1130	20/130°C	2°C	±2°C	135mm
MLS-B60803-1000	6/2130	20/130°C	2°C	±2°C	135mm

**Different Models are also available upon request.
Contact us for more details.**

WATER BATH



CATALOG NO.	DESCRIPTION
MLS-WTBH08	WATER BATH, STAINLESS STEEL
<p>Our Solid stainless steel water bath measures 8" in diameter x 2.75" deep. Features seven concentric rings, steam escape outlet, flat bottom, and handles. Ideal for a variety of heating applications in the laboratory.</p>	

Circulating Water Bath

CATALOG NO.	CAPACITY	WARRANTY
MLS-SWBC22	0.78 cu.ft.	2 Year Limited Warranty
<p>Our special application water baths boast the same features as our other high-performance models, such as: being highly accurate, easy-to-use, rugged, and safe. Our specialty water baths include a polymer coating for quick cleaning.</p>		



DIGITAL Water Bath

CATALOG NO.	CAPACITY	WARRANTY
MLS-SWB7	0.21 cu.ft.	2 Year Limited Warranty
MLS-SWB15	0.5 cu.ft.	2 Year Limited Warranty
MLS-SWB23	0.81 cu.ft.	2 Year Limited Warranty
<p>This durable and dependable water bath comes with a variety of safety and convenience features. It has a unique lid design that allows condensation to drain back into the tank without spilling onto the work area.</p>		



**Different Models are also available upon request.
Contact us for more details.**

GLOVE BOXES

Portable Glove Box System



CATALOG NO.	DESCRIPTION	DIMENSIONS	VOLUME
MLS-H50028-2000	Ready to Use Glove Box System, with 1 pair of gloves and 2 clamping rings	68.5x33x55 cm	126.5 Liters
MLS-H50028-0000	Glove Box Only	68.5x33x55 cm	126.5 Liters
The operator and the external environment are protected with this lightweight, self-contained portable isolation cabinet. Available with or without gas ports.			

The Techni-Dome® Glove Chamber



CATALOG NO.	DESCRIPTION	DIMENSIONS	VOLUME
MLS-F50030-0000	Techni-Dome® 360 Glove Chamber, per each	60 x 60cm	38.1 x 38.1cm
The Techni-Dome® Glove Chamber provides a generous workspace with a small footprint to preserve benchtop space. The unit's two-piece construction allows for quick processing of samples. To use the Glove Chamber, simply open the top half, place materials on the included platform, and close the unit. When not in use, the top half nests into the bottom for convenient storage.			

LABORATORY FREEZERS

The Premier Built In Undercounter Freezers feature a microprocessor temperature controller and display, allow for precise temperature control, verification and recovery versus mechanical style thermostats. Critical samples and supplies are security backed with an extensive package of audible and visual alarms.



CATALOG NO.	MLS-UCLF-SS-4.2CU
DESCRIPTION	4.2 Cu. Ft. Capacity Premier Undercounter Freezer Built-in-left Hinged, Stainless Steel
ELECTRICAL REQUIREMENTS	115V, 60 HZ, 1.5 AMPS, 1/8 HP
DIMENSIONS	Width: 23 3/4" Depth: 24 1/2" Height: 33 3/8"

CATALOG NO.	MLS-UCLF-ADA-4.2CU
DESCRIPTION	4.2 Cu. Ft. Capacity Premier Undercounter Freezer Built-in, Ada
ELECTRICAL REQUIREMENTS	115V, 60 HZ, 1.5 AMPS, 1/8 HP
DIMENSIONS	Width: 23 3/4" Depth: 24 1/2" Height: 31 15/16"



CATALOG NO.	MLS-UCLF-4CU
DESCRIPTION	4 Cu. Ft. Capacity Premier Undercounter Freezer Freestanding (-30°C)
ELECTRICAL REQUIREMENTS	115V, 60 HZ, 2.2 AMPS, 1/4 HP
DIMENSIONS	Width: 23 3/4" Depth: 24" Height: 32 1/8"

LABORATORY FREEZERS

The Premier Freestanding Undercounter Freezers feature a microprocessor temperature controller and display, allow for precise temperature control, verification and recovery versus mechanical style thermostats. Critical samples and supplies are security backed with an extensive package of audible and visual alarms.



CATALOG NO.	MLS-CTLF-1.7CU
DESCRIPTION	1.7 Cu. Ft. Capacity Premier Countertop Freezer Freestanding
ELECTRICAL REQUIREMENTS	115V, 60 HZ, 1 AMP, 1/8 HP
DIMENSIONS	Width: 23 3/4" Depth: 24" Height: 20 3/8"

CATALOG NO.	MLS-CTLF-1.3CU
DESCRIPTION	1.3 Cu. Ft. Capacity Premier Countertop Auto Defrost Laboratory Freezer Freestanding
ELECTRICAL REQUIREMENTS	115V, 60 HZ, 1 AMP, 1/8 HP
DIMENSIONS	Width: 23 3/4" Depth: 24" Height: 20 3/8"
COMPLIANCE	ADA Compliant



CATALOG NO.	MLS-CTLF-ADA-1.3CU
DESCRIPTION	1.3 Cu. Ft. Capacity Premier Countertop Auto Defrost Freezer Freestanding-left Hinged
ELECTRICAL REQUIREMENTS	115V, 60 HZ, 1 AMP, 1/8 HP
DIMENSIONS	Width: 23 3/4" Depth: 24" Height: 20 3/8"
COMPLIANCE	ADA Compliant

LABORATORY FREEZERS

Our Hazardous Location freezers meet NFPA and OSHA guidelines for Hazardous Location, Class 1, Division II, Groups C & D guidelines. These units are engineered for use in environments where volatile / explosive conditions could potentially exist. For storage of flammable or volatile materials within typical laboratory or non-volatile environments, see Flammable Material Storage units.



CATALOG NO.	MLS-GPLF-30CU
DESCRIPTION	30 Cu. Ft. General Purpose Hazardous Location Freezer
ELECTRICAL REQUIREMENTS	115V, 60HZ, 6 AMPS, 1/3 HP
DIMENSIONS	<ul style="list-style-type: none"> • Width: 35 ¾" • Depth: 35" • Height: 77 ½"

CATALOG NO.	MLS-CSLF-14CU
DESCRIPTION	14 Cu. Ft. Capacity Standard Hazardous Location Freezer
ELECTRICAL REQUIREMENTS	115V, 60HZ, 3 AMPS, 1/3 HP
DIMENSIONS	<ul style="list-style-type: none"> • Width: 23 5/8" • Depth: 24 3/8" • Height: 73"



CATALOG NO.	MLS-CSLF-20CU
DESCRIPTION	20 Cu. Ft. Capacity Standard Hazardous Location Freezer
ELECTRICAL REQUIREMENTS	115V, 60HZ, 5.5 AMPS, 1/2 HP
DIMENSIONS	<ul style="list-style-type: none"> • Width: 30 3/4" • Depth: 29" • Height: 74 5/8"

LABORATORY FREEZERS

The EasyChill series -25C freezers is perfect for small to large storage of sample and products. Our unique compressor design offers you speedy cooling and great temperature uniformity inside the chamber.



Features include:

- Great for storage of Covid-19 vaccines, DNA, RNA, virus samples, organs and serum.
- Lockable door, high or low temperature alarms, power failure alarm.
- UL certified
- This unit is NOT designed to be used on a mobile platform.



CATALOG NO.	MLS-ULF-3CU
DESCRIPTION	EasyChill 3 Cu Ft -25°C Upright Freezer UL 115V
ELECTRICAL REQUIREMENTS	115V (±10%) 60Hz 1-Phase, 90 watts
TEMPERATURE RANGE	-10°C to -25°C
CONTROLLER	Microprocessor, LED display
COMPRESSOR	<ul style="list-style-type: none">• Power: 110V 60Hz 1-PHASE• Cooling type: direct cooling• Defrost mode: manual• Refrigerant: CFC-free, R600a HC refrigerant
CHAMBER	<ul style="list-style-type: none">• Dimensions: 17 x 16 x 25" (WxDxH)• Material: coated steel• Volume: 3 Cu Ft
DOOR AND GASKET	Lockable door, dual sealing gaskets
STORAGE BIN	Three
ACCESS PORT	One, 1" diameter, left of the freezer
NOISE LEVEL	27 dBA
COMPLIANCE	UL 61010-1 CSA C22.2
WARRANTY	One year

LABORATORY FREEZERS

The new EasyChill series -30C 18 Cu Ft upright freezers is great for large storage of sample and products. Our unique compressor design with HC refrigerant offers you speedy cooling, great temperature uniformity inside the chamber, energy efficiency, and very quite operation.



Features include:

- Great for storage of Covid-19 vaccines, DNA, RNA, virus samples, organs and serum.
- UL certified
- This unit is NOT designed to be used on a mobile platform.

CATALOG NO.	MLS-ULF-18CU
DESCRIPTION	EasyChill 18 Cu Ft -30°C Upright Freezer UL 110V
ELECTRICAL REQUIREMENTS	115V (±10%) 60Hz 1-Phase, 600W, 6.5A
PERFORMANCE	<ul style="list-style-type: none"> • Temperature range: -10°C to -30°C • Time from ambient to -30°C: 3 hours • Temperature uniformity: ±4°C • Time from -30°C to -10°C with door closed (ambient 25°C): 5 hours
CONTROLLER	Microprocessor, LED display
COMPRESSOR	<ul style="list-style-type: none"> • Power: 110V 60Hz 1-PHASE • Cooling type: direct cooling • Defrost mode: manual • Refrigerant: CFC-free, R600a HC refrigerant
CHAMBER	<ul style="list-style-type: none"> • Dimensions: 27 x 24 x 48.3" (WxDxH) • Material: coated steel • Volume: 17.9 Cu Ft • Number of chambers: two
DOOR AND GASKET	Two lockable door, with dual sealing gaskets
STORAGE BIN	Ten, plastic
ACCESS PORT	One, on the left of the freezer
NOISE LEVEL	43 dBA
COMPLIANCE	UL 61010-1 CSA C22.2
WARRANTY	One year

CUSTOMIZE
YOUR OWN
MODEL